



EGRET

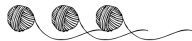
by Kirsten Joel

DESIGN INFORMATION

Egret is a simple triangle shawl worked from the top down starting with a section in stockinette stitch. The lace panel section showcases an easy-to-memorize lace and rib stitch. The bottom edge of the shawl is worked in a 1x1 rib for a clean and minimal finish.

Knit in light-as-air Cattail Silk, a light-fingering weight 100% silk yarn, Egret will please all summer long and is a great transitional piece for those early fall days. The sample was knit in Moon White, but whatever color you choose, please share your progress with #egretshawl

SKILL LEVEL



FINISHED MEASUREMENTS

78" wingspan by 41" deep

YARN

Purl Soho Cattail Silk - Light fingering weight; 100% Silk 618 yards (565 meters) / 100g (3.5 ounces); 2 skeins (approximately 800 yards used for sample).

Photographed in Moon White.

GAUGE

22 sts and 36 rows = 4" over Stockinette stitch

NEEDLES

US 3 / 3.25mm 32" circular needles, or size to obtain gauge.

Note: Shawl body is worked back & forth in rows. Circular needles are used to accommodate the large number of stitches.

TOOLS

Tapestry needle, blocking wires, blocking pins.

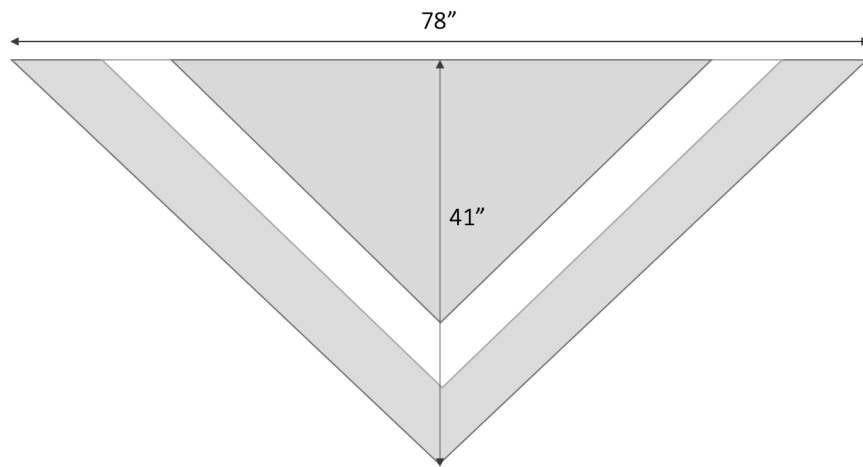
kirstenjoel.com

All text, images, & illustrations ©2024 Kirsten Joel
For personal use only



SCHEMATIC

Note: Schematic is approximate as final size depends on how aggressively you block your shawl.

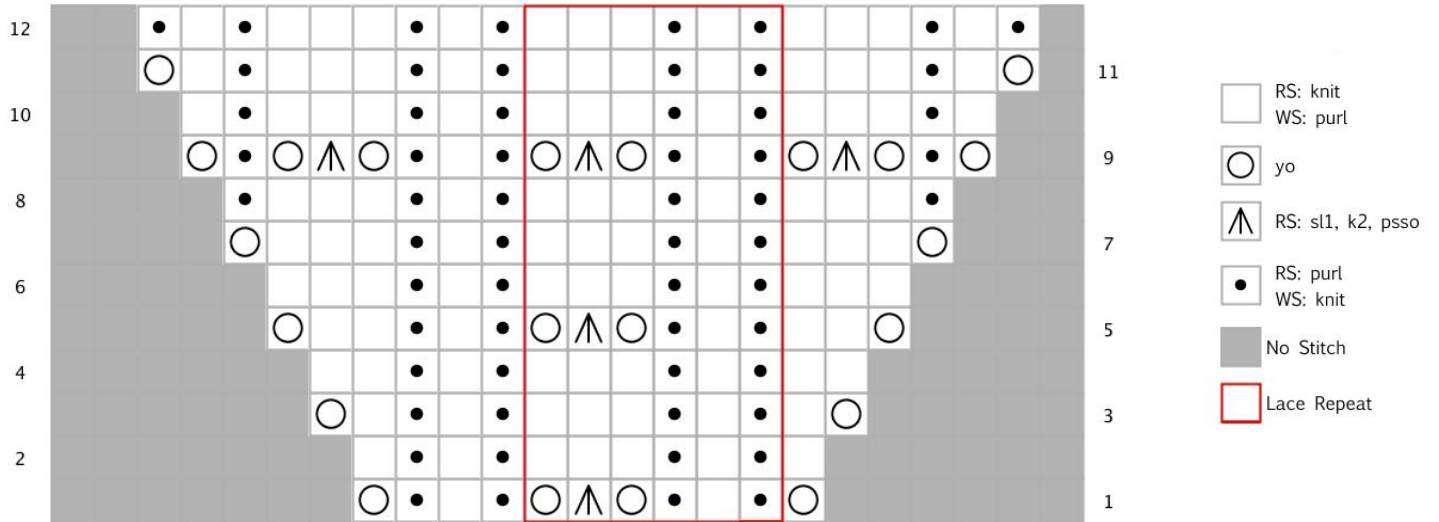


kirstenjoel.com

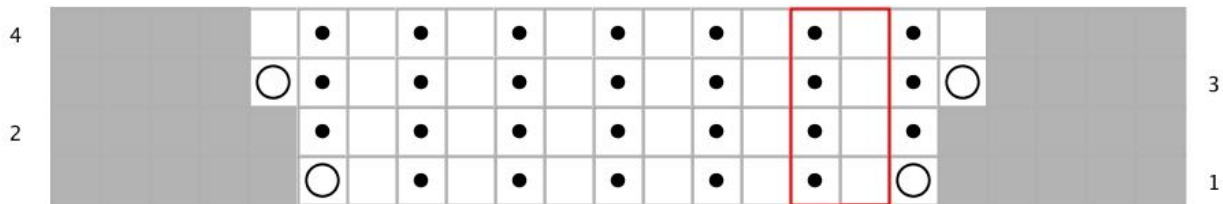
All text, images, & illustrations ©2024 Kirsten Joel
For personal use only

CHART INSTRUCTIONS

EGRET LACE CHART



RIBBING CHART



WRITTEN INSTRUCTIONS

EGRET LACE STITCH PATTERN

Row 1 (RS): Yo, *p1, k1, p1, yo, sk2p, yo; work from * to last 3 sts, p1, k1, p1, yo
Row 2 (WS): P1, k1, p1, k1, *p3, k1, p1, k1; work from * to last 1 st, p1
Row 3: Yo, k1, *p1, k1, p1, k3; work from * to last 4 sts, p1, k1, p1, k1, yo
Row 4: P2, k1, p1, k1, *p3, k1, p1, k1; work from * to last 2 sts, p2
Row 5: Yo, k2, *p1, k1, p1, yo, sk2p, yo; work from * to last 5 sts, p1, k1, p1, k2, yo
Row 6: *P3, k1, p1, k1; work from * to last 3 sts, p3
Row 7: Yo, k3, *p1, k1, p1, k3; work from * to marker, yo
Row 8: K1, *p3, k1, p1, k1; work from * to last 4 sts, p3, k1
Row 9: Yo, p1, yo, sk2p, yo, *p1, k1, p1, yo, sk2p, yo; work from * to last 1 st, p1, yo
Row 10: P1, k1, *p3, k1, p1, k1; work from * to last 5 sts, p3, k1, p1
Row 11: Yo, k1, p1, k3, *p1, k1, p1, k3; work from * to last 2 sts, k1, p1, yo
Row 12: K1, p1, k1, *p3, k1, p1, k1; work from * to marker

RIBBING

Row 1 (RS): Yo, *k1, p1; work from * to last st, k1, yo
Row 2 (WS): *K1, p1; rep from * to last st, k1
Row 3: Yo, p1 *k1, p1; rep from * to marker, yo
Row 4: P1, *k1, p1; rep from * to marker





ABOUT THE DESIGNER

Originally from Los Angeles, Kirsten moved to Charleston, SC with her husband Jason and quickly planted roots with a group of girlfriends and started her family. She strongly believes in taking moments back for yourself and being intentional about putting yourself first, for you and your craft. Her designs allow you to be present for all of life's little moments and create finished pieces that will quickly become

wardrobe staples. She loves working with wool, silk, cotton, and linen in classic, neutral colors.

CREDITS

Tech Editing: Chaitanya Muralidhara

CONTACT

A lot of hard work goes into ensuring these patterns are simple to understand and error-free. If you get stuck, need extra guidance, or think there may be an error, please email hello@kirstenjoel.com, and I will connect with you as soon as I can.

SUBSCRIBE

Enjoyed this pattern? [Subscribe to my newsletter](#) to be the first to know when new designs are launched. I'll also send helpful tips and techniques so that you can connect with your craft and make the most of your knitting practice.

kirstenjoel.com

All text, images, & illustrations ©2024 Kirsten Joel
For personal use only

YOU MIGHT ALSO LIKE...



ENOREE
accessories



JORDAN
accessories



SWEETGRASS
accessories

kirstenjoel.com

All text, images, & illustrations ©2024 Kirsten Joel
For personal use only